

Timpani
Glockenspiel
Percussion

Charlie Barber



for chamber orchestra

Instrumentation:

2 Flutes
 2 Oboes
 2 Clarinets in Bb / A
 2 Bassoons

2 Horns in F
 2 Trumpets in B flat

Timpani

Percussion: Glockenspiel, Tam-tam, Orchestral Bass Dm, Snare Drum

Violin 1
 Violin 2
 Viola
 Violoncello
 Contrabass

Strings: 'Divisi' indicates conventional outside-inside division

Score in C

Duration:

c. 18 minutes

Programme note:

Cinema italiano for chamber orchestra is a tribute to the great tradition of Italian cinema from the end of the Second World War to the 1980s.

The suite brings together music by Nino Rota, Renzo Rossellini, Manuel De Sica and Ennio Morricone, written for films by some of Italy's most celebrated directors: Luchino Visconti, Federico Fellini, Roberto Rossellini, Vittorio De Sica and Giuseppe Tornatore.

The selection reflects a personal response to films that have left a profound impression both on the compiler and on the history of world cinema. Together, these works capture the lyricism, humanity and emotional depth that define Italian film at its most enduring.

The films featured in the suite are:

Rocco e i suoi fratelli (Rocco and His Brothers) Luchino Visconti, 1960; music: Nino Rota

Roma città aperta (Rome, Open City) Roberto Rossellini, 1945; music: Renzo Rossellini

Il giardino dei Finzi Contini (The Garden of the Finzi-Continis) Vittorio De Sica, 1970; music: Manuel De Sica

La Dolce Vita Federico Fellini, 1960; music: Nino Rota

Cinema Paradiso Giuseppe Tornatore, 1988; music: Ennio Morricone

Charlie Barber
 May 2026

Cinema italiano

1. Rocco e i suoi Fratelli (Rocco and His Brothers)

dir. Luchino Visconti, 1960

i. Main titles

A

Pesante, drammatico

Nino Rota

(arr. Charlie Barber)

$\text{♩} = 84$

Timp *tr* *tr* *tr*

Tam-tam *f* *f* *ff*

To B. D.



10 **B** *4* **C** *tr*

ff *mf* *ff*



17 *10* *tr*

ff *mf* *p*

ii. Terra Lontana

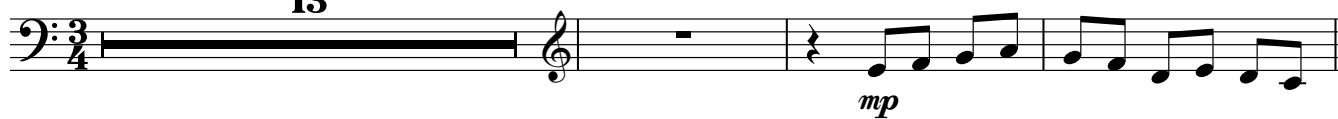
D Tempo di valse

31

♩. = 58

Glockenspiel

13

*mp*

47

E

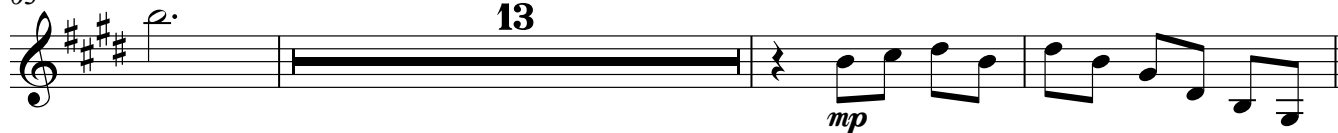
13

*mp**mf*

63

F

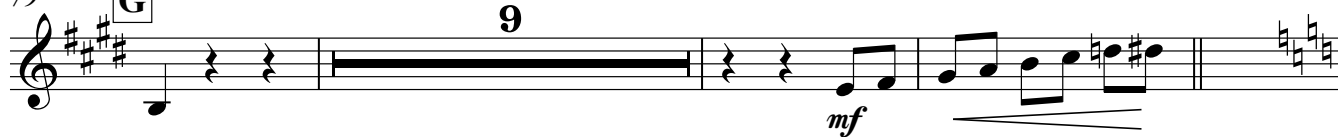
13

*mp*

79

G

9

*mf*

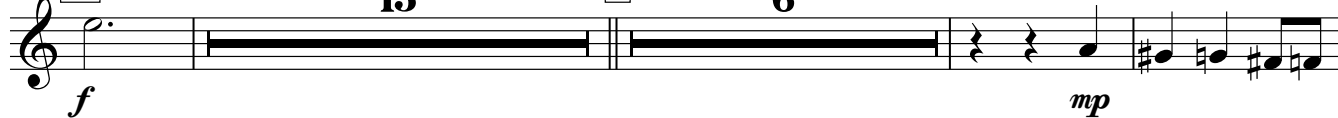
91

H

15

I

6

*f**mp*

115

5

*mp*

123

J

4

poco Rall...



129

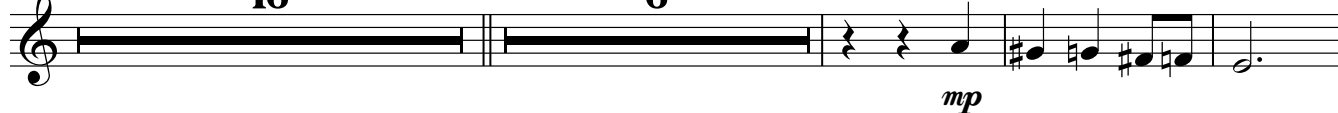
K

a tempo

16

L

6

*mp*

154

5

mp

161

M To Timp. 29

iii. Nadia

Andante, con espressivo

192

N $\text{♩} = 76$ 3 5 **O** 6

208

P 3 3 **Q** 3

220

R Timpani **S** 9

pp *p*

235

T 6 *tr* *ppp*

245

U 5 3 3 5

ff *f* *pp*

Orch. Bass Dm

ff *f* *pp*

2. Roma città aperta (Rome Open City)

dir. Roberto Rossellini, 1946

Renzo Rossellini
(arr. Charlie Barber)

Andante
254 **A** ♩ = 60 **4** **B** **16** Timpani *tr* *pp* *ff*

Misterioso
276 **C** Più mosso ♩ = 66 **3** *sf* *ff* *p* *p*

Bass Dm

281 **3** *ff* *To S. D.* *ff* *ff* *p*

285 **D** **Snare** *f* *fp* *f* *pp* *f* *fp*

289 *f* *pp* *f* *ff* **Bass Drum** *ff*

293 **Lento** ♩ = 56 **4**

3. Il Giardino dei Finzi Contini (The Garden of the Finzi-Contini)

dir. Vittorio De Sica, 1970

Manuel De Sica
(arr. Charlie Barber)

Moderato poco rubato

297 **A** ♩ = 82

TACET



4. La dolce vita

dir. Federico Fellini, 1960

Nino Rota
(arr. Charlie Barber)

i. Main titles

Brillante, Allegro non troppo

355 **A** ♩ = 116

B

3 3 Timp tr 2

A musical score for Timpani (Timp) and Bass Drum (Bass Dm). The score is divided into two systems. The first system has a 4/4 time signature. The Timpani part has a 3-measure rest, followed by a 3-measure rest, then a 3-measure rest with a trill (tr) and a forte (ff) dynamic. The Bass Drum part has a 3-measure rest, followed by a 3-measure rest, then a 3-measure rest with a trill (tr) and a forte (ff) dynamic. The second system has a 2/4 time signature. The Timpani part has a 2-measure rest, followed by a 2-measure rest, then a 2-measure rest with a trill (tr) and a forte (ff) dynamic. The Bass Drum part has a 2-measure rest, followed by a 2-measure rest, then a 2-measure rest with a trill (tr) and a forte (ff) dynamic. The score ends with a 3/8 time signature and a 2-measure rest. The text "To S. D." is written above the final measure.

ff tr ff tr To S. D. 2

363

2

A musical staff in bass clef with a 3/8 time signature. The staff is filled with a solid black line, indicating a TACET (silence) instruction.

369   Colour low strings + bassoon
(3 timps: D, A, F sharp) *sim.*

Snare *ff* *To B. D.* *pp*

p \leftarrow *f*

376

mp

385

392

Bass Dm *ff* *To S. D.* *f*

396  **Festoso**

404 

Snare *ff* *f*

410 *ppp*

412



5. Cinema Paradiso

dir. Giuseppe Tornatore, 1988

Andante, tranquillo

Ennio Morricone
(arr. Charlie Barber)

483 **A** $\text{♩} = 60$ **B** Timpani 6 *tr* *pp*

496 **C** 7 *tr* *p*

506 **D** con slancio 6 *tr* *p*

515 **E** 5 *tr* sec *f* *tr* sec *p* *f*

Tam-tam

525 **F** Meno mosso $\text{♩} = 56$ 5 *tr* *p* *tr* *p*

To B. D. Bass Drum

534 **G** 6 *tr* *f* *p* *tr* *ff*

6 *f* *p* *ff*